



GAT MONTHLY MEMBERSHIP PROGRESS REPORT

Results as of: 5/31/2023

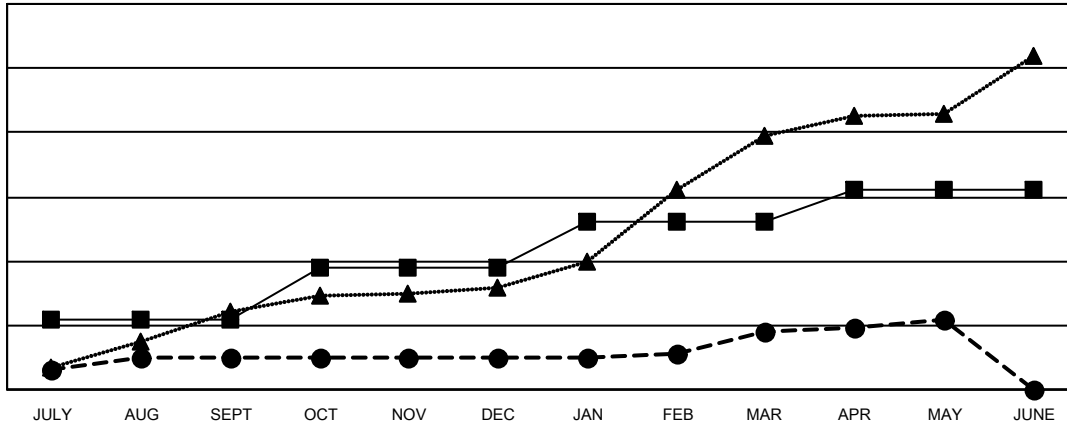
Multiple District 3233

LOCATION: INDIA

Clubs			
RESULTS FOR 2022-2023			
QUARTER	NEW CLUB GOAL	NEW CLUBS	DROPPED CLUBS
JULY/AUG/SEPT	22	10	12
OCT/NOV/DEC	16	0	63
JAN/FEB/MAR	14	8	11
APR/MAY/JUNE	10	4	4

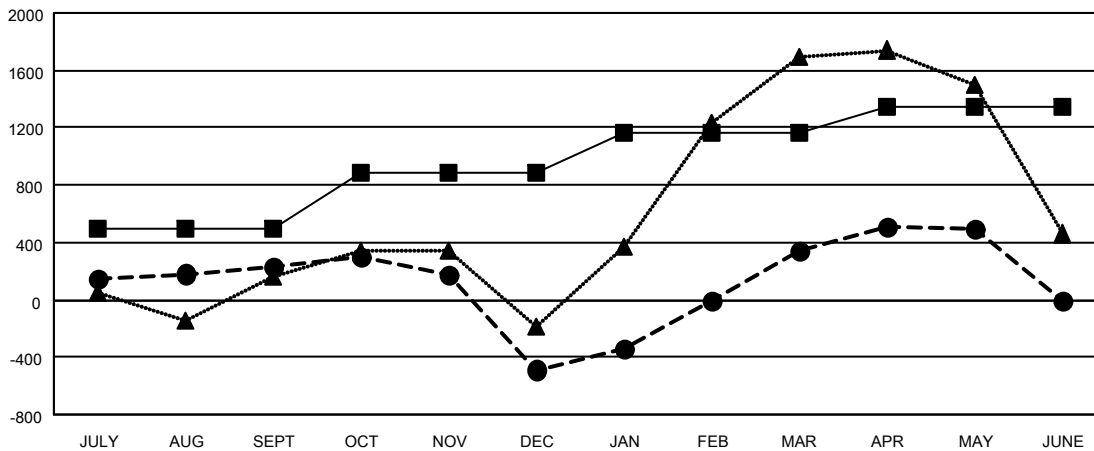
Members			
RESULTS FOR 2022-2023			
QUARTER	MEMBER GROWTH NET GOAL	MEMBER GROWTH ACTUAL	DROPPED MEMBERS ACTUAL (including transfers)
JULY/AUG/SEPT	495	989	638
OCT/NOV/DEC	395	416	1,094
JAN/FEB/MAR	280	1,212	203
APR/MAY/JUNE	180	694	408

GOALS AND ACTUAL NEW CLUBS CUMULATIVE



- - CURRENT YEAR GOALS FOR NEW CLUBS
- - CURRENT YEAR ACTUAL NEW CLUBS
- ▲ - LAST YEAR ACTUAL NEW CLUBS

GOALS AND ACTUAL MEMBERS CUMULATIVE



- - MEMBER GROWTH NET GOAL
- - MEMBER GROWTH ACTUAL
- ▲ - LAST YEAR MEMBERSHIP ACTUAL

DROPPED CLUBS: 90	504 CLUBS OF 873 ADDED 1 OR MORE NEW MEMBERS	GENDER DISTRIBUTION
DROPPED MEMBERS	CLICK HERE FOR CUMULATIVE MEMBERSHIP DATA	MALE 14,513 (67.03%)
DECEASED 47		FEMALE 7,121 (32.89%)
CLUB CANCELLED 682		NON BINARY 1 (0.00%)
OTHER 1,614		PREFER NOT TO ANSWER 15 (0.07%)
TOTAL 2,343		TOTAL FAMILY UNIT MEMBERS 10,504
		FAMILY MEMBERS PAYING HALF DUES 6,219